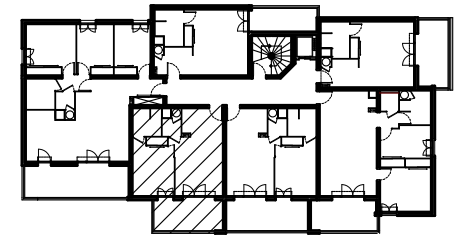
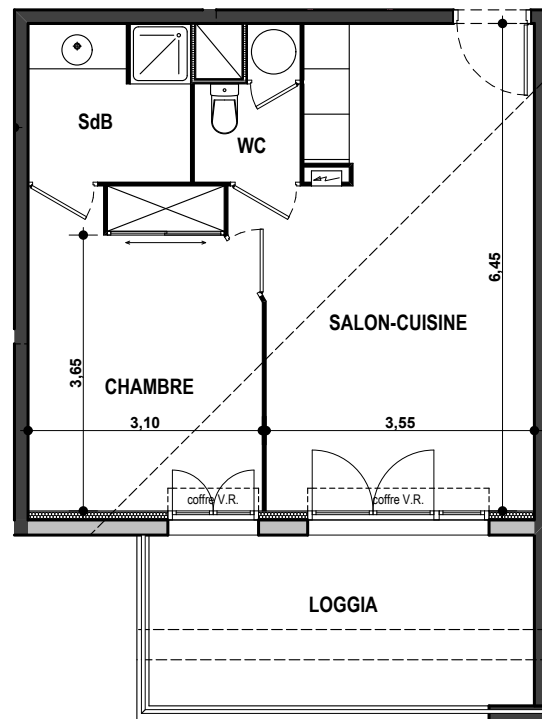


Résidence "Le Belvédère 2"



APPARTEMENT: C-54
5EME ETAGE

Type 2 pièces T2 Surfaces habitables

Salon - Cuisine	22,20 m ²
Chambre - Placard	12,75 m ²
Salle de Bain	4,50 m ²
WC	2,35 m ²
TOTAL	41,80 m²
Loggia	11,55 m ²